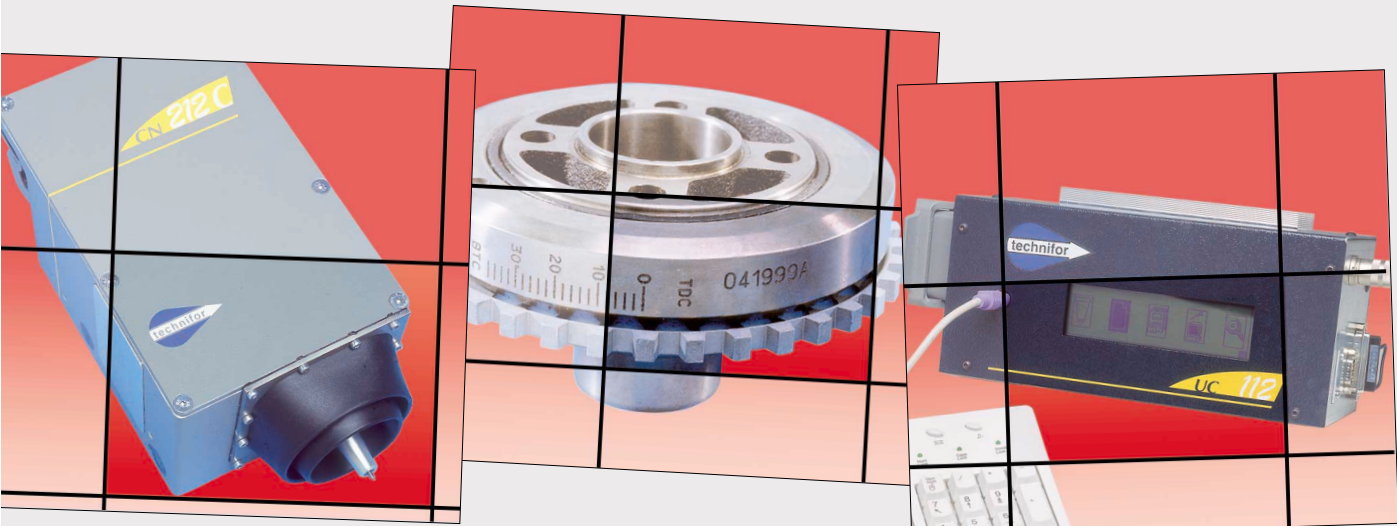


Micro-Percussion Marking Machines



CN212

CN212 Cp
CN212 Sp
CN212 Dp

Pneumatic



A MARK WHICH DEFIES TIME

Applications

INTEGRABLE MARKING MACHINES

CN212Cp Compact: 45 x 45mm marking window,
 CN212Sp Standard : 100 x 100mm marking window,
 CN212Dp Double : 200 x 100mm marking window.

USAGE: ideal solution for the marking of metal and plastic parts, of various shapes and surface conditions (automobile, mechanical, cast, electromechanical, ...).

ENVIRONMENT: conceived for industrial integrations:
 - on production lines,
 - in automatic or semi-automatic assembly or test stations.

INTEGRATED SOFTWARE FEATURES:

- Create / Modify / Save marking data:
 - Management of 6 Input / 2 Output board.
 - Calculation of variable data: date codes (several formats available), shift codes, serial numbers.
- Management of text style:
 - choice of fonts (standard, OCR, ...),
 - character height adjustable in steps of 0.1mm,
 - choice of logos,
 - compression, spacing, automatic centering,
 - linear marking, angular, radial, inclination, inverted, mirrored.
- Downloading of custom fonts and logos.

HIGH PERFORMANCE

Specially conceived to meet high marking quality standards while working in severe, intense production environments:

- Up to 6 characters per second.
- "High definition" marking quality adjustable according to required marking speed.

SAVE TIME AND MONEY ON INTEGRATION

The independent user-friendly UC112 control unit (screen + internal software + keyboard) speeds programming and eliminates the need for a PC or PLC.

SIMPLIFIED INDUSTRIAL INTEGRATION

Control the marking head by:

- File selection from memory of the UC112 by activation of inputs.
- Control unit in independent mode.
- PLC or other information system, via RS232 link.

Easy to mount:

- Simple attachment: 2 M8 mounting holes
- 2 Ø8H8 positioning holes.

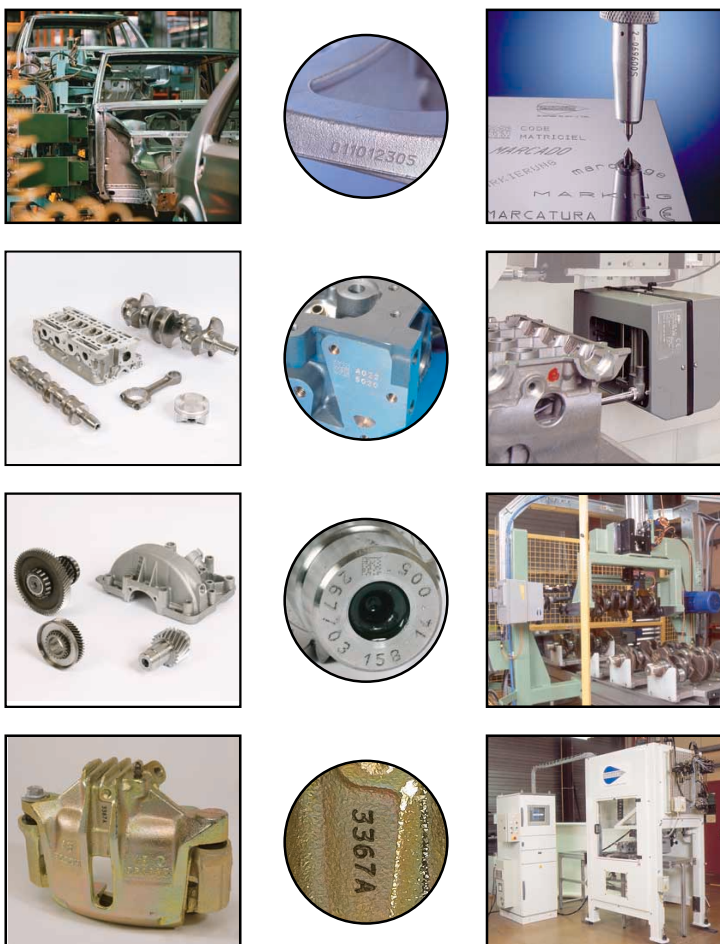
PREVENTIVE MAINTENANCE TOOL:

Stylus usage counter: information can be sent to an output or to the LCD screen.

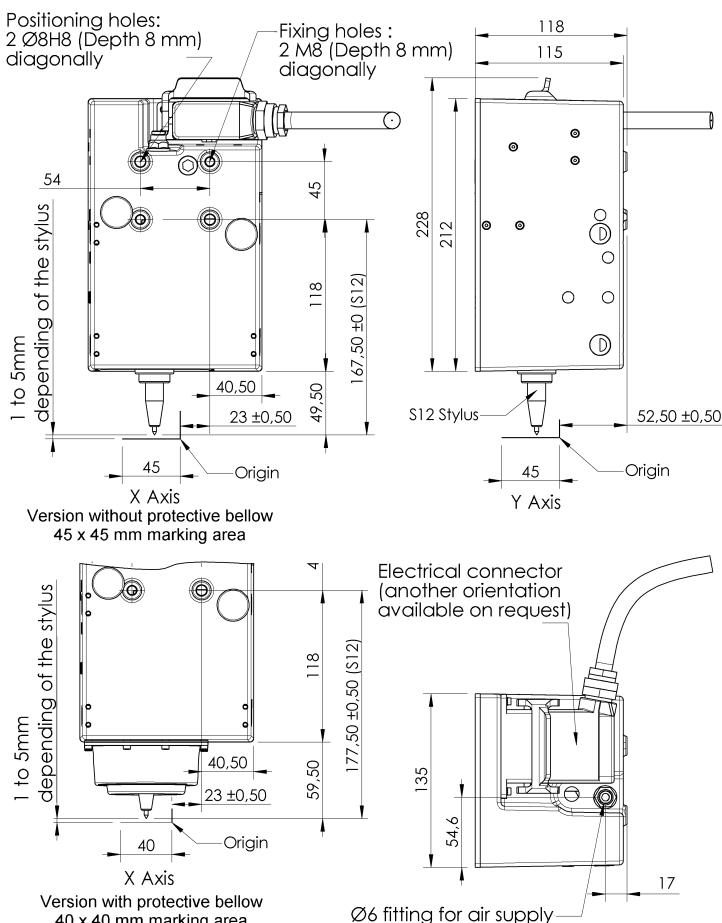
NORMS:

- Directive "Machine" 89/392/CEE.
- Directive "Electromagnetic compatibility" 89/336/CEE.
- Directive low voltage "Electric devices" 73/23/CEE.
- Complies with part 15 of the FCC rules.

Permanent Marking



CN212Cp



Technical characteristics

COMMON CHARACTERISTICS OF CN212Cp/Sp/Dp MACHINES

Accessories/Adaptations:

- Extended stylus.
- Extended amplitude stylus
- 3m Head/CCU cord (standard), 6m, 10m or 15m.
- Height adjustment system (± 22 mm).
- Column.
- Start marking foot pedal.
- Start cycle / End cycle button box.
- 115 or 230 V AC / 24 V DC – 110 W power supply.
- Rotary Marking Device.
- Motorized Z axis.

Environment:

- Operating temperature: +5 to +45°C (+41 to +113 °F).

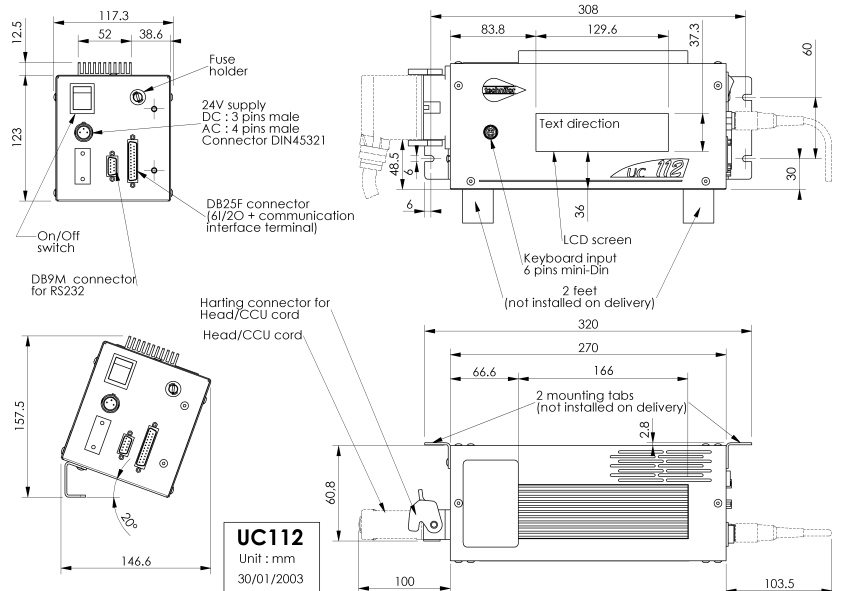
Options:

- T101W Windows® marking software.
- File transfer software between the UC112 and a PC.
- External data input via RS232 link.
- 19" 4U rack mount face plate for UC112.
- Additional 8I/8O board.
- Protective shutters, protective boot(CN212Sp/Dp).
- Protective bellows (CN212Cp).
- IP45 protection (for CN212Cp equipped with bellows).

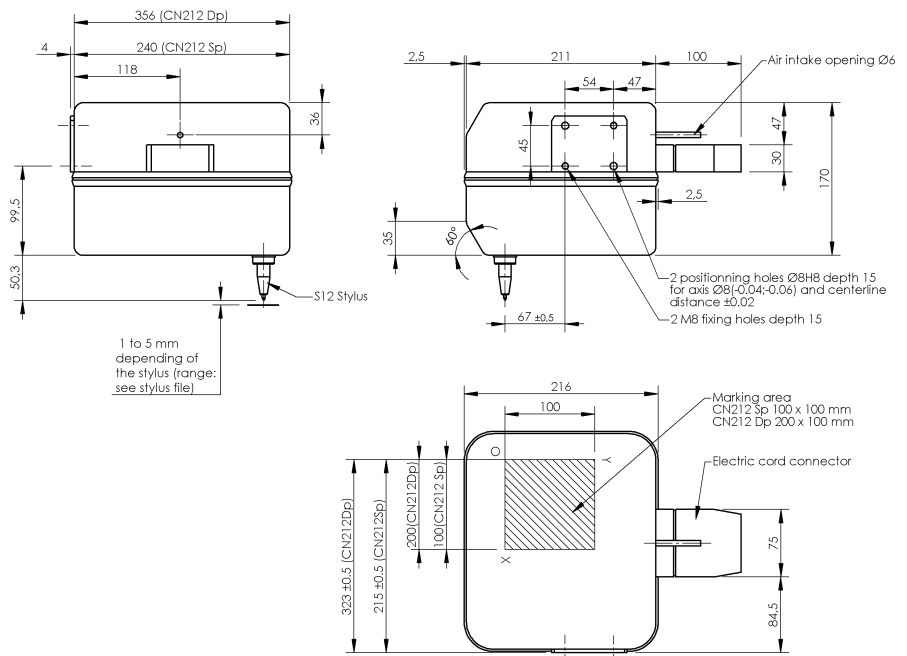
Machines	CN212Cp	CN212Sp	CN212Dp
Dimensions (without stylus and connector)	135 x 118 x 212mm (9.4x8.3x6.8")	246.5 x 216 x 170mm (9.4x8.3x6.8")	363 x 216 x 170mm (14.3x8.3x6.8")
Weight (head without stylus)	3.9kg (8.6lbs)	8kg (17.6lbs)	9.5kg (21lbs)

- **Dimensions (lxhxw) without connectors:** 270x117.3x135.5mm (10.6x4.6x5.3").
- **Weight:** 3.2Kg (7lbs).
- **Electrical supply:** 24 V DC $\pm 10\%$.
- **Consumption:** 110 W.
- **Data input by:**
 - 105 key AT external keyboard (supplied with UC112).
 - PC using T101W Windows® software.
 - PLC via RS232 link (DB9 connector).
 - Other information systems via RS232 link.
 - Bar code readers via RS232 link (optional).
- "User" mode (limited functions) and "Supervisor" mode (password protected access to all functions).
- Data import from CSV or Excel file (using T101W program).
- Export marked text via RS232 link:
 - to a PC: for creation of a historic file.
 - to a printer: for marking a label.
 - to a PLC: to verify text marked, for example.
- File selection from memory:
 - by 105 key AT keyboard.
 - by 6I/2O (on DB25 connector).
 - by RS232 connection.
- Communication interface (DB25 connector):
 - Start of marking.
 - End of cycle.
 - Reset.
 - Machine ready.
 - 6I/2O.
- Automatic sizing of Data Matrix™ 2D Code.

UC112



CN212Sp/Dp



Accessories



Motorized Z axis.



Column.



CHR height adjustment system ($\pm 22\text{mm}$).



Range of standard and extended stylus.



Industrial footswitch.



Standard footswitch.



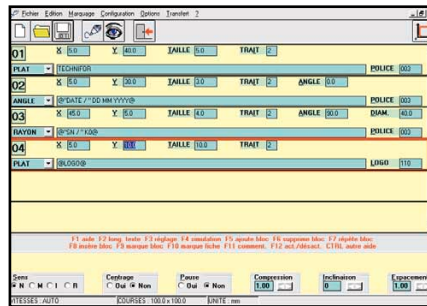
Start cycle/End cycle button box.



230V AC/24V DC – 110W power supply.
115V AC/24V DC – 110W power supply.



Rotary Marking Device (DMC).

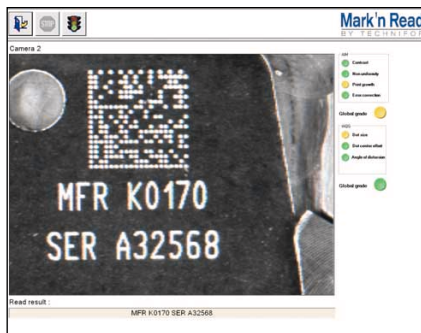


T101W Windows® standard marking software.

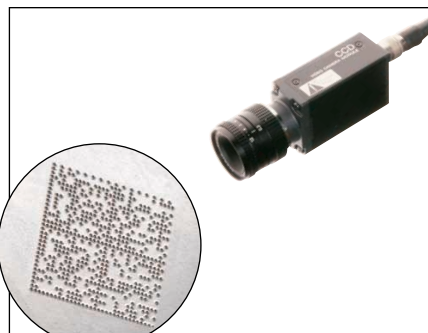
Mark'n Read™

by technifor

In partnership with experts in machine vision and 2D symbology readers for manufacturing environments, Technifor is in a unique position to supply and support Direct Part Marking solutions with associated reading, for verifying that the correct code has been marked, and for monitoring the marking quality.



Software to verify the quality of the mark.



Integrated camera, on line or hand-held reader decoding function.



Technifor SAS - Miribel site - F



114, quai du Rhône - F-01708 MIRIBEL Cedex

Tel. +33 (0)4 78 55 85 85 - Fax +33 (0)4 78 55 22 94

E-Mail : tf@technifor.com

www.technifor.com